

**VAN DER VALK**



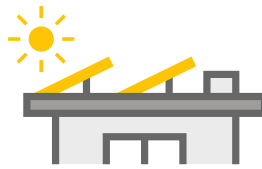
Developer and producer  
of solar mounting systems



✓ Innovative

✓ Customer-oriented

✓ Reliable



## Mounting systems for flat roofs

The solar mounting systems of Van de Valk Solar Systems for flat roofs have been developed while taking roof and wind load into consideration and thus comply with the strictest safety requirements.

Our assortment for flat roofs are well-known for their simplicity and speed of mounting. After completing the design with our calculation software, the necessary ballast (small quantity) can be ordered directly. This simplifies the logistics and installation.

### Orientation: south

### Orientation: east-west

#### ValkPro+ L10

- Landscape mounting
- 10° tilt angle
- Pitch south: 1500 mm (1200\*, 1300\*, 1400\* or 1600\*)
- Pitch east-west: 2300 mm (2150\*)



#### ValkPro+ L15

- Landscape mounting
- 15° tilt angle
- Pitch south: 1500 mm (1200\*, 1300\*, 1400\* or 1600\*)
- Pitch east-west: 2300 mm (2150\*)



#### ValkPro+ P10

- Portrait mounting
- 10° tilt angle
- Pitch south: 2300 mm(\*)
- Pitch east-west 60 cells: 3500 mm(\*)
- Pitch east-west 72 cells: 4200 mm(\*)



\* Another pitch is possible for projects > 500 kWp.



## These are the advantages:

- ValkPro+ in 10 and 15 degree landscape and 10 degree portrait
- Mounting speed of 3-4 minutes per panel
- Metal connectors (no plastic) so it is prepared for earthing and lightning protection
- Standard application up to 25m height (higher upon request)
- Minimal number of articles required
- Low ballast, supported by the Eurocodes and windtunnel tests (specially tested for PVC roofs)
- Also suitable for 2m solar panels and "high power" (extra wide and/or long) panels
- Fitted with flexible, soft rubber feet for absorbing expansion and shrinkage and protecting roof

# Pitched roofs ValkPitched



## Mounting systems for pitched roofs

When developing mounting systems for roofs, ease of mounting and speed are the most important points of attention.

Flexibility is another important point. There are many types of pitched roof, after all, each with its own requirements for a secure attachment. Our assortment for pitched roofs is both well designed and complete.

The systems are applicable to many different types of roof, with of course the right, secure roof attachment for every pitched roof.

### ValkPitched - Tiled

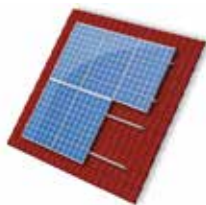


Standard roof tiles\*



Slate roof tiles

\* Also available as kit!



### ValkPitched - Trapezoidal



Steel roof/sandwich



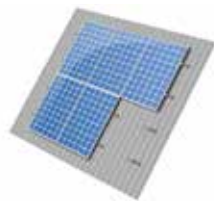
### ValkPitched - Corrugated



Eternit corrugated roof



Steel corrugated roof



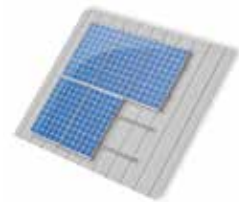
### ValkPitched - Standing Seam



Standing seam flat



Standing seam round



### ValkPitched - Plain tile



Bitumen



PVC



EPDM

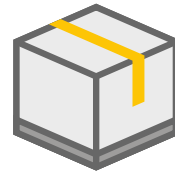


## These are the advantages:

- Complete range of roof solutions such as tiled roofs, steel roofs, corrugated roofs, bitumen roofs and seamed joint roofs (Kalzip)
- Only 2 types of panel clamps as they are adjustable (28-50mm)
- Only 1 type of profile (available in various lengths in aluminium and black colour)
- Standard profile lengths long enough to accommodate large high power panels (less sawing waste)
- For tiled roofs the possibility to screw (Smartline, Strongline) and hang (Slimline)
- Prepackaged kits possible like ValkBox
- Rapid mounting due to extensive premounting of parts
- Standard application up to 25m height (higher upon request)



# ValkKits and ground mount systems



## Our ValkKits and other clever solutions

We are a one-stop shop for solar systems and everything concerning the mounting of PV-panels. Along with mounting systems for flat and pitched roofs, we are also specialised in solutions for facades/canopies and ground mount systems.

Minimise your stock holding with our ValkKits. The pre-packed format reduces both picking time and mistakes.

### Flat roofs

#### ValkDouble / ValkTriple / ValkQuattro

- Up to twice as many panels on a roof
- Universal mid-clamp and endclamps (H 28-50 mm)
- Minimal height due to small fixed tilt angle of 10°



### Flat roofs

#### ValkBox3

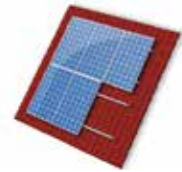
- Very easy to position
- Mounting for a single panel
- For roofs with many obstacles



### Pitched roofs

#### ValkBox - Slimline / Smartline / Strongline

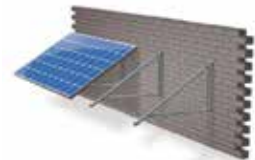
- Mounting system for pitched roofs with roof tiles
- All of the small mounting materials packaged as kit in one box
- Nine variants for lay-outs with up to nine panels per row



### Facades /canopies

#### ValkCanopy

- Landscape configuration
- Complete package including clear manual and table of forces
- Decoration of the building



### Ground

#### ValkPro+ as ground mount system

- No ground penetration and heavy machines needed
- Special foundation blocks take care of height, ballast and stability
- All variants of ValkPro+ possible



### Ground

#### ValkField - Single Row / Double Row

- Clamp system in portrait configuration
- Various foundation methods
- Available in short or long rows, depending on the location



# Calculation software

www.valkpvplanner.com



## Our online calculation software

With the free to use ValkPVplanner, every flat or pitched roof project can be designed via satellite images, a building drawing prepared by you, or simply by specifying the number of panels desired. The result is a detailed manual including installation drawings and material lists, and for flat roofs a ballast overview.

The ValkPVplanner is user-friendly, it can be linked to your webshop and/or another PV programme via an API connection. Default values for the most common variables provide rapid insight into the possibilities for your project.

### Option 1: Simple mode

Draw a system without a building

- Draw a system on a blank sheet
- Specify the number of panels per row and the number of rows



### Option 2: Satellite map

Draw a system on an existing building

- Draw the system on an existing roof using satellite images, such as Google Maps
- Quickly and easily define the mounting material for multiple and different roof surfaces



### Option 3: White map

Draw a system on a new building

- Draw a system on a blank sheet
- For new buildings, it is sufficient to state the building dimensions



## ValkCableCare

Van der Valk Solar Systems offers a complete range of cable management products under the name ValkCableCare. With these products the cabling of the PV-system can be arranged in a neat, safe and quick manner. We have two lines: Access and Premium.

### ValkCableCare Access

- Large range of cable baskets, covers, partitions and accessories
- With the use of "snap-on" coupling plates, they are quickly and easily bound together
- Cable baskets can be positioned in the recesses of the rubber tile carriers of the ValkPro+ system

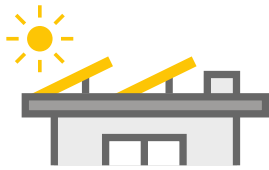


### ValkCableCare Premium

- Fast and easy installation without tools using special pre-mounted snap connectors
- Universal roof supports including snap connector
- Cable baskets and roof supports packaged as set



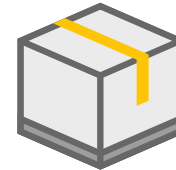
# Solar mounting systems for:



Flat roofs

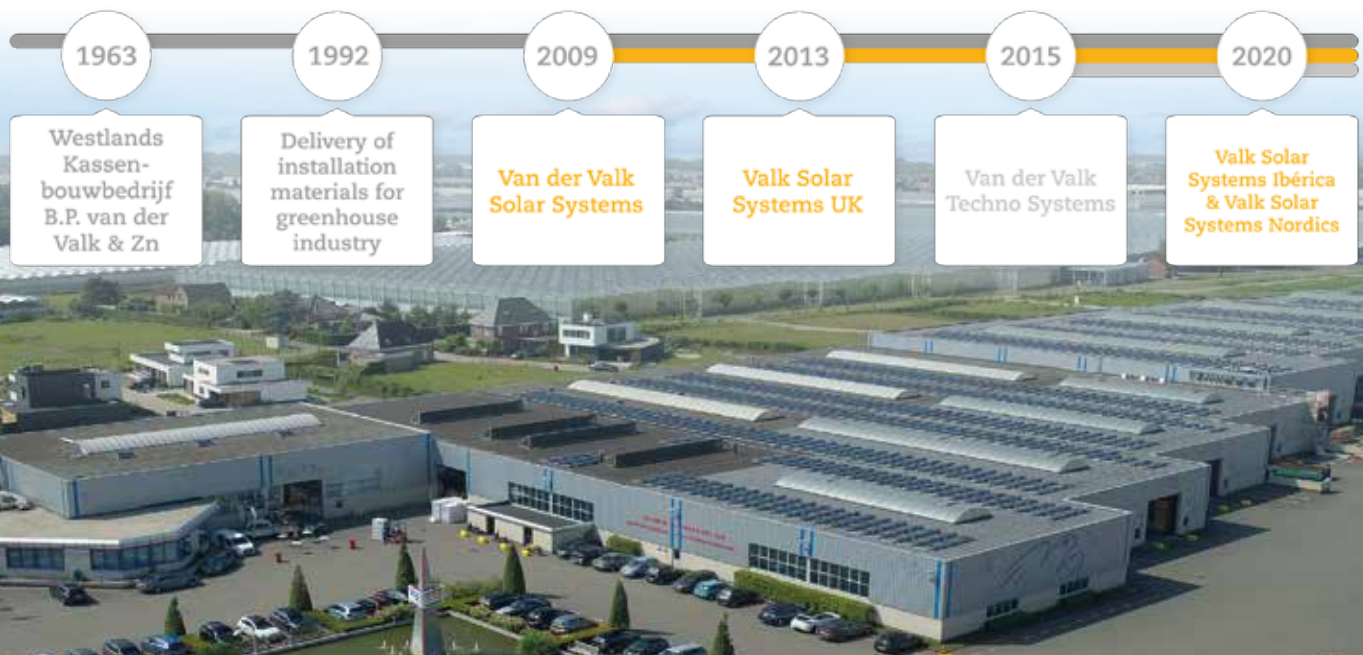


Pitched roofs



Kits

- Innovative systems designed according to globally valid norms
- Fast and reliable deliveries thanks to modern machine park and large stocks
  - System supplier since 1963
  - Free to use software for project design and calculation
- Rapid mounting thanks to pre-mounting of essential components
  - Extensive technology and marketing support
  - Committed and entrepreneurial family-owned company



## CONTACT DETAILS | DEVELOPER AND PRODUCER OF SOLAR MOUNTING SYSTEMS



**Van der Valk Solar Systems + International**  
Zwartendijk 73 - 2681 LP Monster, The Netherlands  
+31 (0)174 - 25 49 99  
sales@valksolarsystems.com

**Valk Solar Systems UK + IE**  
+44 (0)1304 - 89 76 58  
sales@valksolarsystems.co.uk

**Valk Solar Systems Ibérica**  
+34 (0)69 - 932 65 44  
ventas@valksolarsystems.es

**Valk Solar Systems Nordics**  
+46 (0)7 - 24 41 60 82  
sales@valksolarsystems.se

[www.valksolarsystems.com](http://www.valksolarsystems.com)

