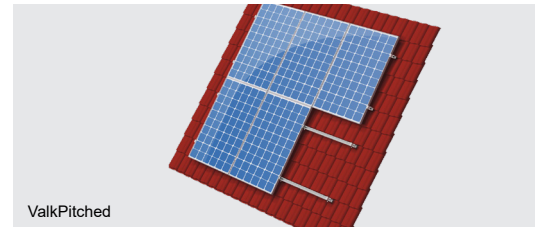


ValkPro+



ValkPitched

Datasheet Cable Management

Technical specifications

- Cable management for PV installations.
- For AC and DC wiring.
- Easy to fix to the mounting system or solar panel.
- Solutions for one cable, an entire bundle or a cable tray.

Cable clamps vs. competitive systems

- No more dangling cables.
- No more breaking tie-raps.
- Durable solution due to the manufacture of high quality stainless steel.
- Solutions for every Van der Valk Solar Systems mounting system.

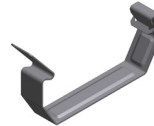
Article numbers



Art. 732001
SS cable clamp small



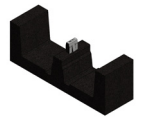
Art. 732003
SS cable clamp large for insert profile



Art. 732005
SS cable clamp large for side profile



Art. 732011
Plastic cable clamp ValkPro+

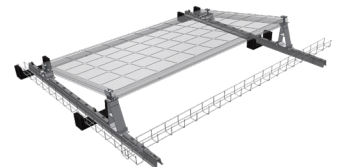


Art. 729622
Rubber tile carrier suited for cable tray at ValkPro+

* Cable tray available elsewhere

Cable management at the ValkPro+

- The cable management at the ValkPro+ can be realized by (a combination of) the following three methods:
 - Cable tray parallel to roof carrier profiles (see illustration) placed in the bowl of the rubber tile carrier.
 - Cable tray crosswise, parallel to the rows, fixed with hammerhead bolt in one of the holes of the steel roof carrier profiles.
 - Through our standard small stainless steel cable clamp, mounted to solar panel, back plate, side plate or aluminum housing.



Summary table

	Cable clamp small	Cable clamp large for insert profile	Cable clamp large for side profile	Rubber tile carrier for cable tray
ValkPitched - Clamp	✓		✓	
ValkPitched - Insert	✓	✓		
ValkPitched - Trapezoidal	✓			
ValkPro+ *	✓			✓
ValkFlat - Portrait *	✓		✓	
ValkFlat - Landscape *	✓	✓**	✓***	

* Both South and East West configuration ** Landscape Insert *** Landscape Clamp