

FusionSolar App

Quick Guide (Charger)

Issue 01
Date 2022-09-27



Copyright © Huawei Digital Power Technologies Co., Ltd. 2022. All rights reserved.

No part of this document may be reproduced or transmitted in any form or by any means without prior written consent of Huawei Digital Power Technologies Co., Ltd.

Trademarks and Permissions



HUAWEI and other Huawei trademarks are the property of Huawei Technologies Co., Ltd.

All other trademarks and trade names mentioned in this document are the property of their respective holders.

Notice

The purchased products, services and features are stipulated by the contract made between Huawei Digital Power Technologies Co., Ltd. and the customer. All or part of the products, services and features described in this document may not be within the purchase scope or the usage scope. Unless otherwise specified in the contract, all statements, information, and recommendations in this document are provided "AS IS" without warranties, guarantees or representations of any kind, either express or implied. The information in this document is subject to change without notice. Every effort has been made in the preparation of this document to ensure accuracy of the contents, but all statements, information, and recommendations in this document do not constitute a warranty of any kind, express or implied.

Huawei Digital Power Technologies Co., Ltd.

Address: Huawei Digital Power Antuoshan Headquarters

Futian, Shenzhen 518043

People's Republic of China

Website: <https://e.huawei.com>

Contents

1 Registering a FusionSolar App Installer Account.....	1
2 Device Commissioning.....	3
2.1 Charger FE Port Directly Connected to a Meter.....	4
2.2 Charger FE Port Directly Connected to a Router.....	7
2.3 Charger Connected to a Router Through WLAN.....	9
3 FAQs.....	13
3.1 How Do I Reset the Default Password of a Charger Using an RFID Card When I Forget the Password?	13
3.2 How Do I Connect to a Charger when I Cannot Log In to the FusionSolar App Due to Poor Network Connection?.....	14
4 Related Information.....	15
4.1 Indicators.....	15

1 Registering a FusionSolar App Installer Account

An installer account is required for charger deployment and commissioning. If you do not have an installer account of the FusionSolar Smart PV Management System (Cloud) or FusionSolar app, perform the following steps to register an account.

Intended Audience

- Owners who commission chargers by themselves
- Installers who have not registered a company with the FusionSolar Smart PV Management System (Cloud) or FusionSolar app

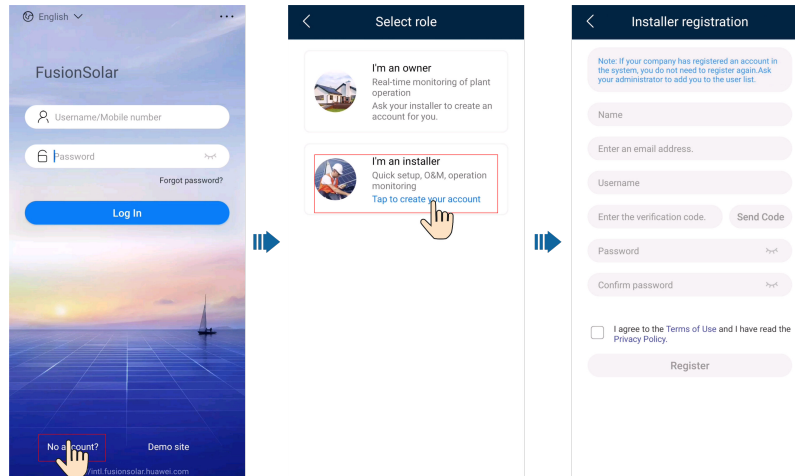
NOTE

If your company has registered an account, contact the administrator to add you to the user list.

Procedure

1. Tap **No account?** in the lower part of the login screen on the FusionSolar app.
2. On the **Select role** screen, tap **I'm an installer** and register an account as prompted.

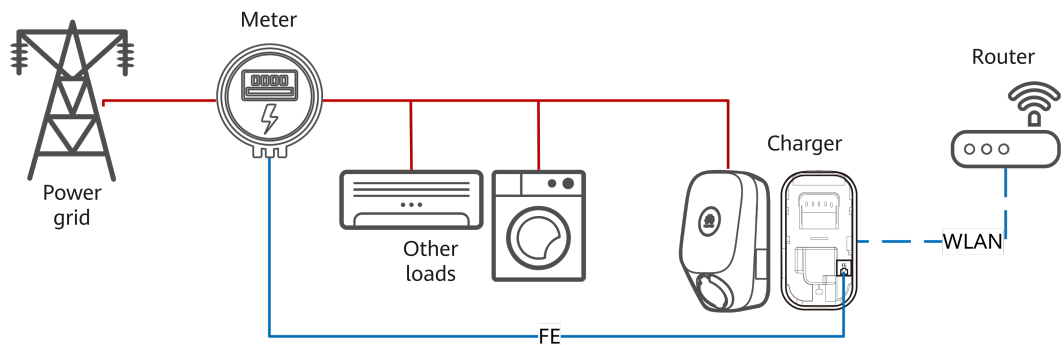
After the account is registered, the user can log in to the FusionSolar app with the registered username and password.



2 Device Commissioning

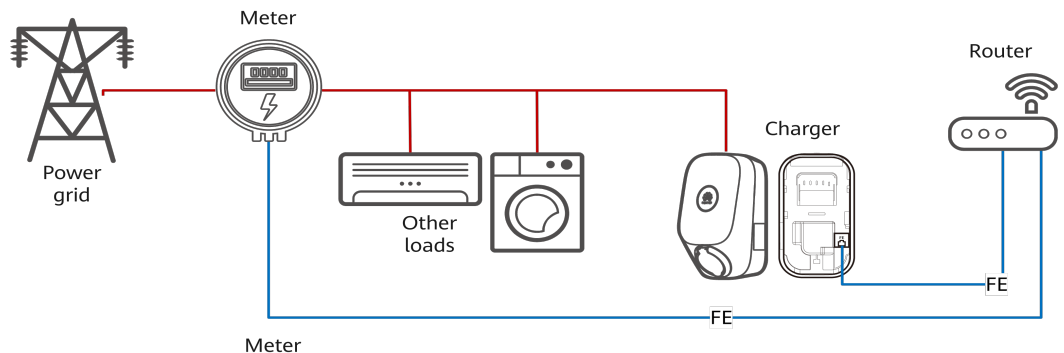
Perform commissioning based on the actual networking scenarios of chargers, meters, and routers.

Figure 2-1 Charger FE port directly connected to a meter



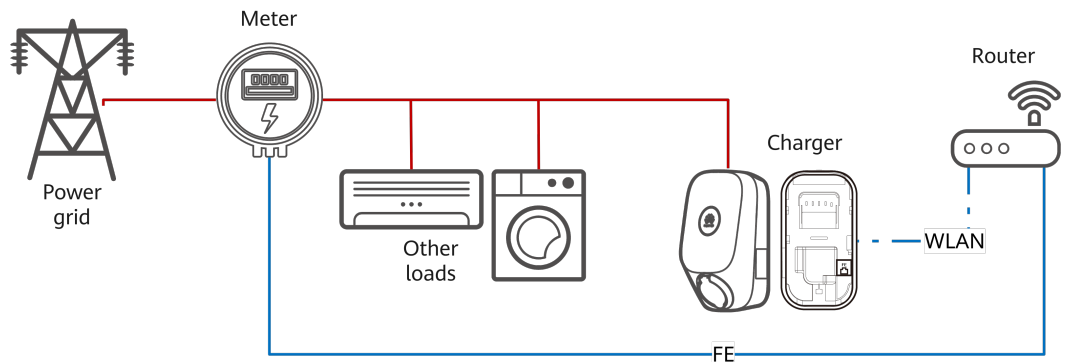
For details about the commissioning procedure, see [2.1 Charger FE Port Directly Connected to a Meter](#).

Figure 2-2 Charger FE port directly connected to a router



For details about the commissioning procedure, see [2.2 Charger FE Port Directly Connected to a Router](#).

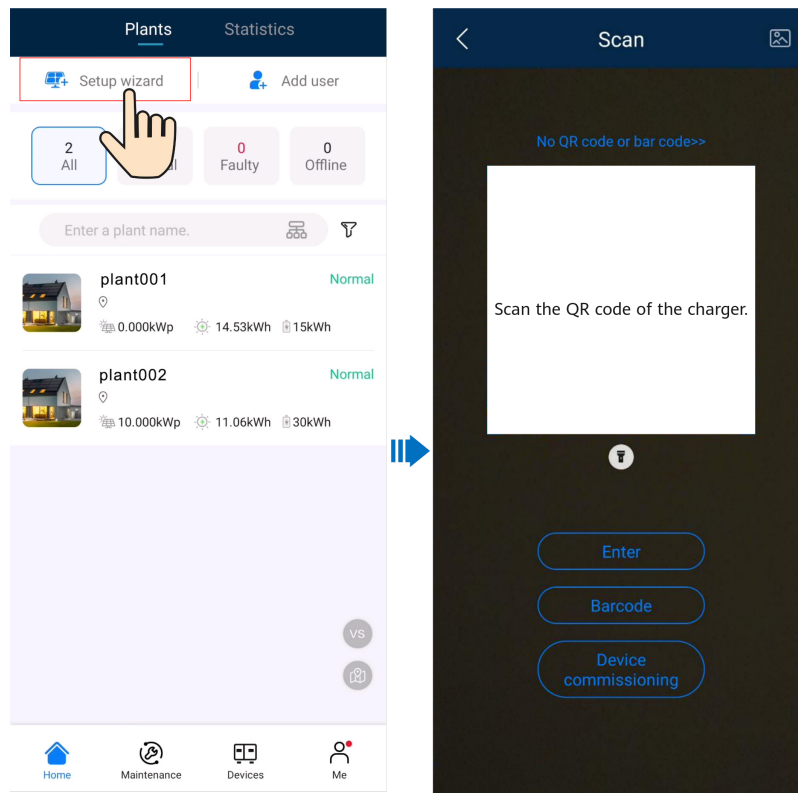
Figure 2-3 Charger connected to a router through WLAN



For details about the commissioning procedure, see [2.3 Charger Connected to a Router Through WLAN](#).

2.1 Charger FE Port Directly Connected to a Meter

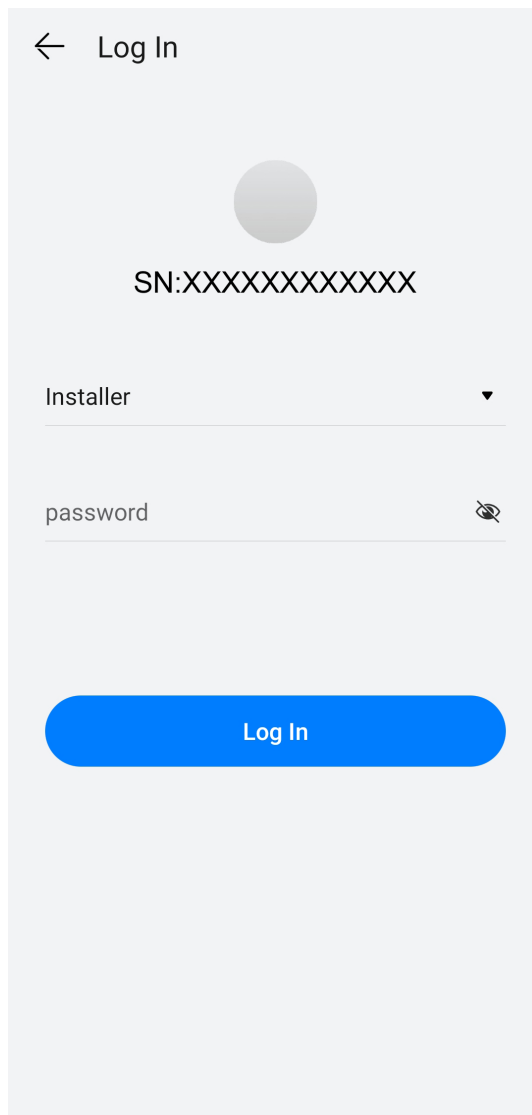
1. Log in to the FusionSolar app as an installer, tap **Setup wizard** on the home screen, scan the QR code of the charger, and follow the instructions to connect to the charger WLAN.



 **NOTE**

The last six digits of the product WLAN name are the same as the last six digits of the product SN. Use the initial password upon first power-on and change it immediately after login. To ensure account security, change the password periodically and keep the new password in mind. Not changing the initial password may cause password disclosure. A password left unchanged for a long period of time may be stolen or cracked. If a password is lost, devices cannot be accessed. In these cases, the user is liable for any loss caused.

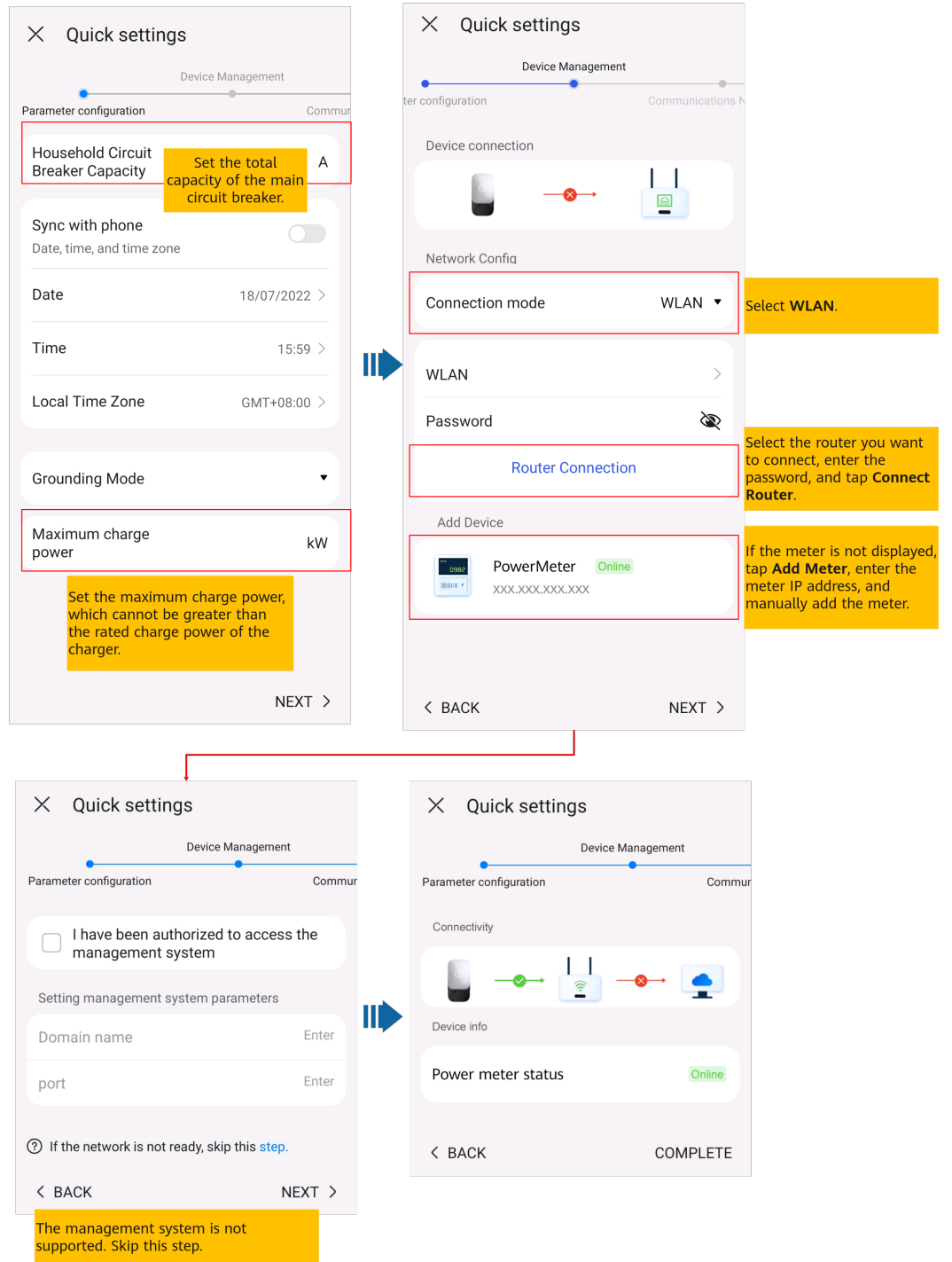
2. Log in to the app as an **installer**.



 **NOTE**

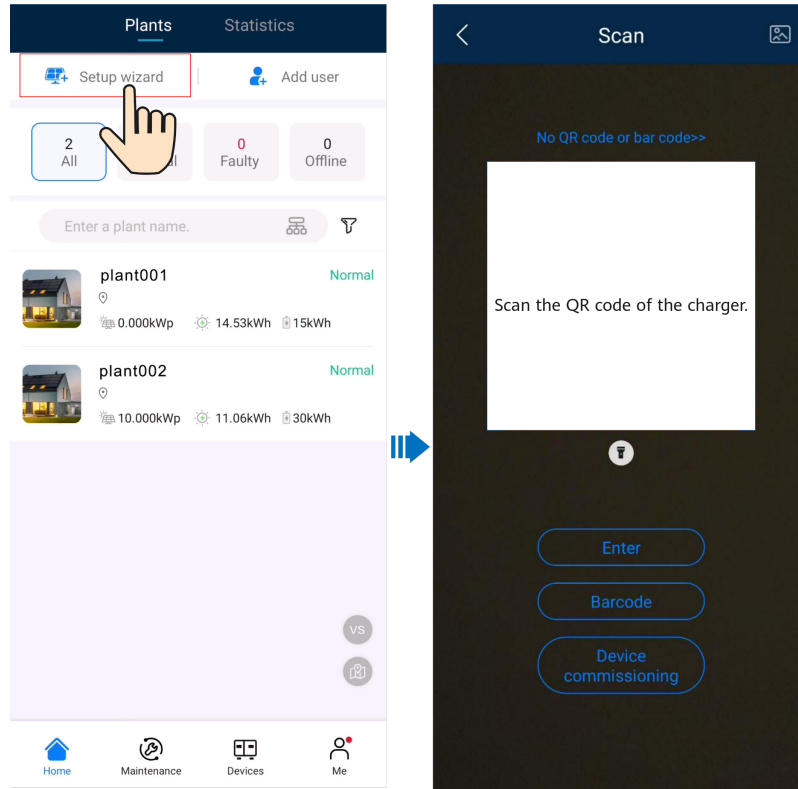
For the first login, the initial password is **Changeme**. If the system prompts you to set a password, set the login password as prompted.

3. Commission the device according to the wizard procedure.



2.2 Charger FE Port Directly Connected to a Router

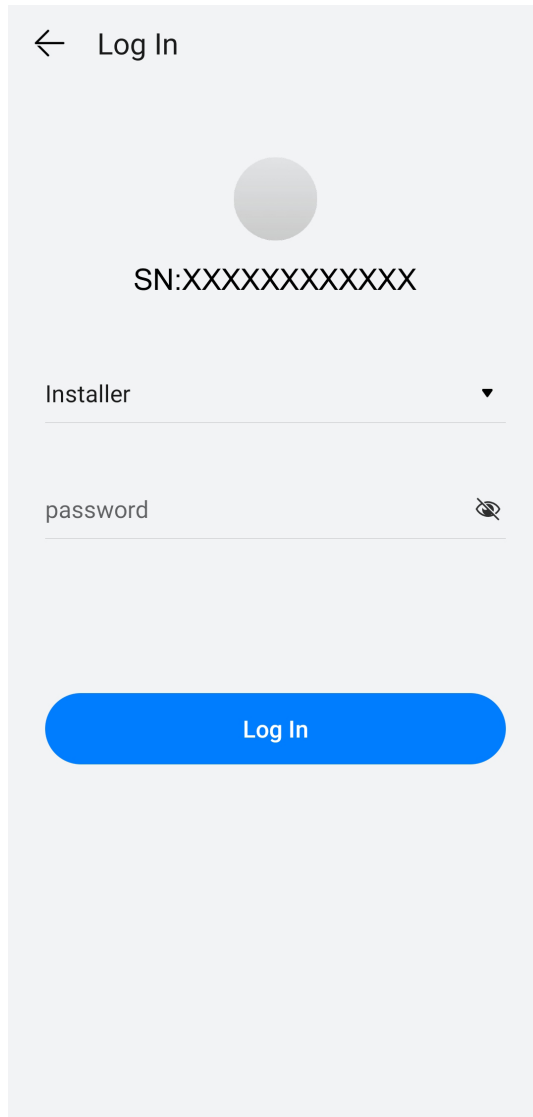
1. Log in to the FusionSolar app as an installer, tap **Setup wizard** on the home screen, scan the QR code of the charger, and follow the instructions to connect to the charger WLAN.



NOTE

The last six digits of the product WLAN name are the same as the last six digits of the product SN. Use the initial password upon first power-on and change it immediately after login. To ensure account security, change the password periodically and keep the new password in mind. Not changing the initial password may cause password disclosure. A password left unchanged for a long period of time may be stolen or cracked. If a password is lost, devices cannot be accessed. In these cases, the user is liable for any loss caused.

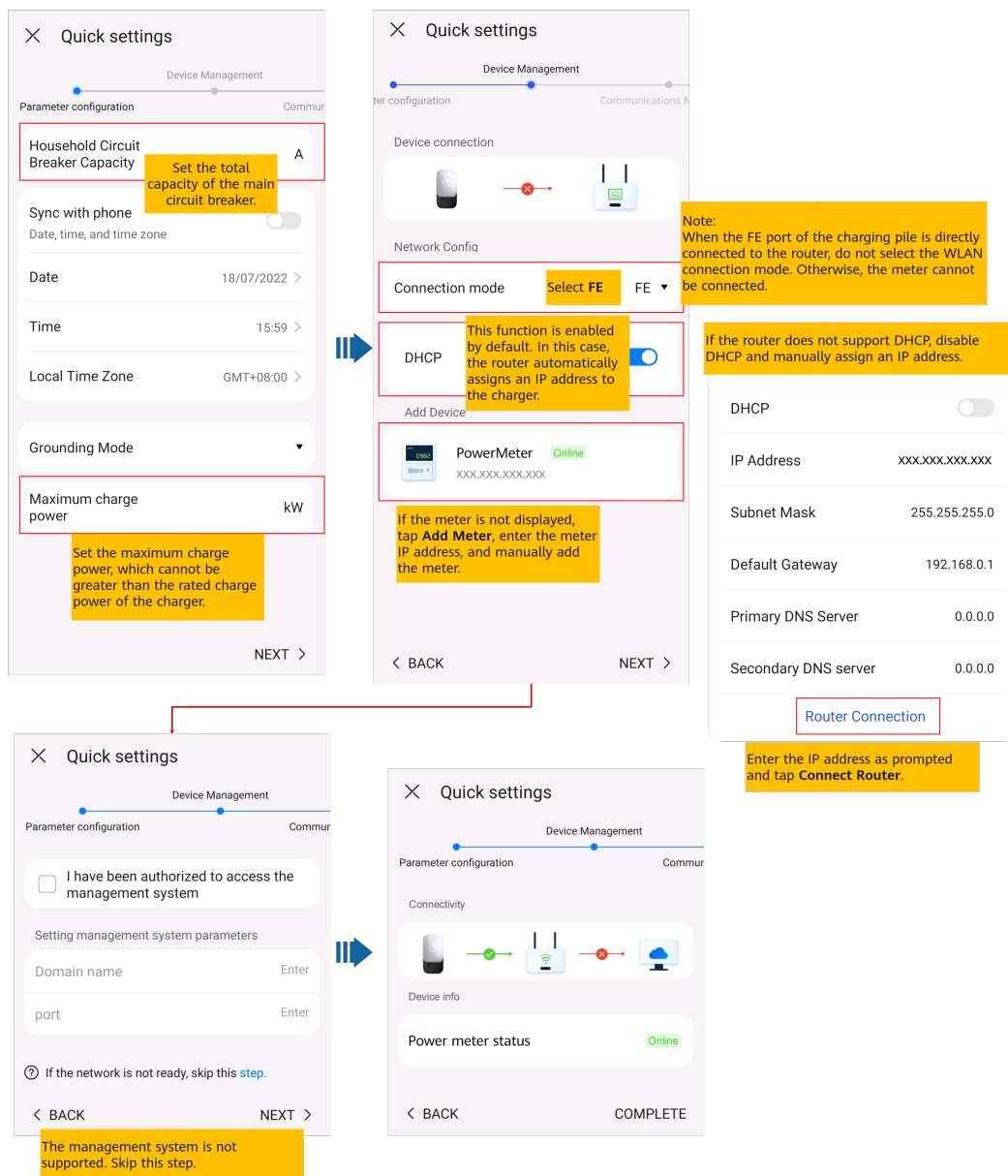
2. Log in to the app as an **installer**.



 **NOTE**

For the first login, the initial password is **Changeme**. If the system prompts you to set a password, set the login password as prompted.

3. Commission the device according to the wizard procedure.

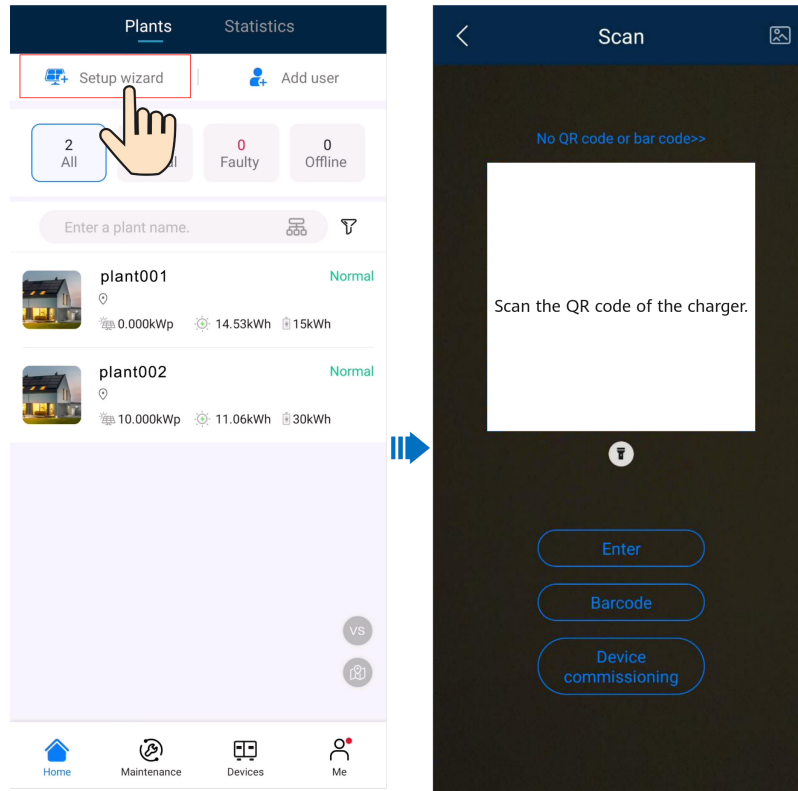


NOTE

Set the capacity of the main circuit breaker based on site requirements. If the set value is greater than the actual capacity, the circuit breaker trips due to overcurrent. If the capacity of the circuit breaker is too low, the charger cannot work.

2.3 Charger Connected to a Router Through WLAN

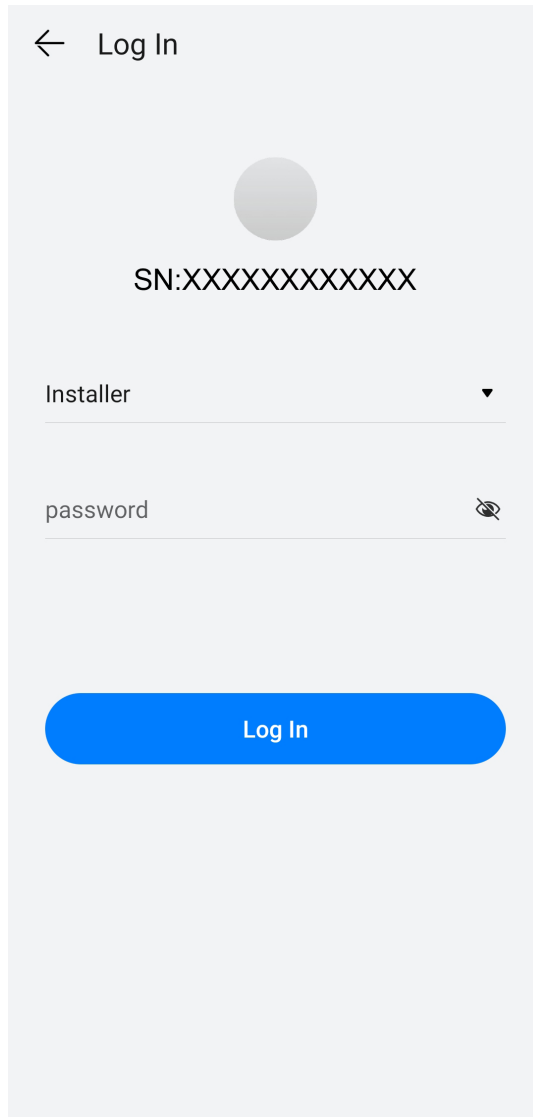
1. Log in to the FusionSolar app as an installer, tap **Setup wizard** on the home screen, scan the QR code of the charger, and follow the instructions to connect to the charger WLAN.



NOTE

The last six digits of the product WLAN name are the same as the last six digits of the product SN. Use the initial password upon first power-on and change it immediately after login. To ensure account security, change the password periodically and keep the new password in mind. Not changing the initial password may cause password disclosure. A password left unchanged for a long period of time may be stolen or cracked. If a password is lost, devices cannot be accessed. In these cases, the user is liable for any loss caused.

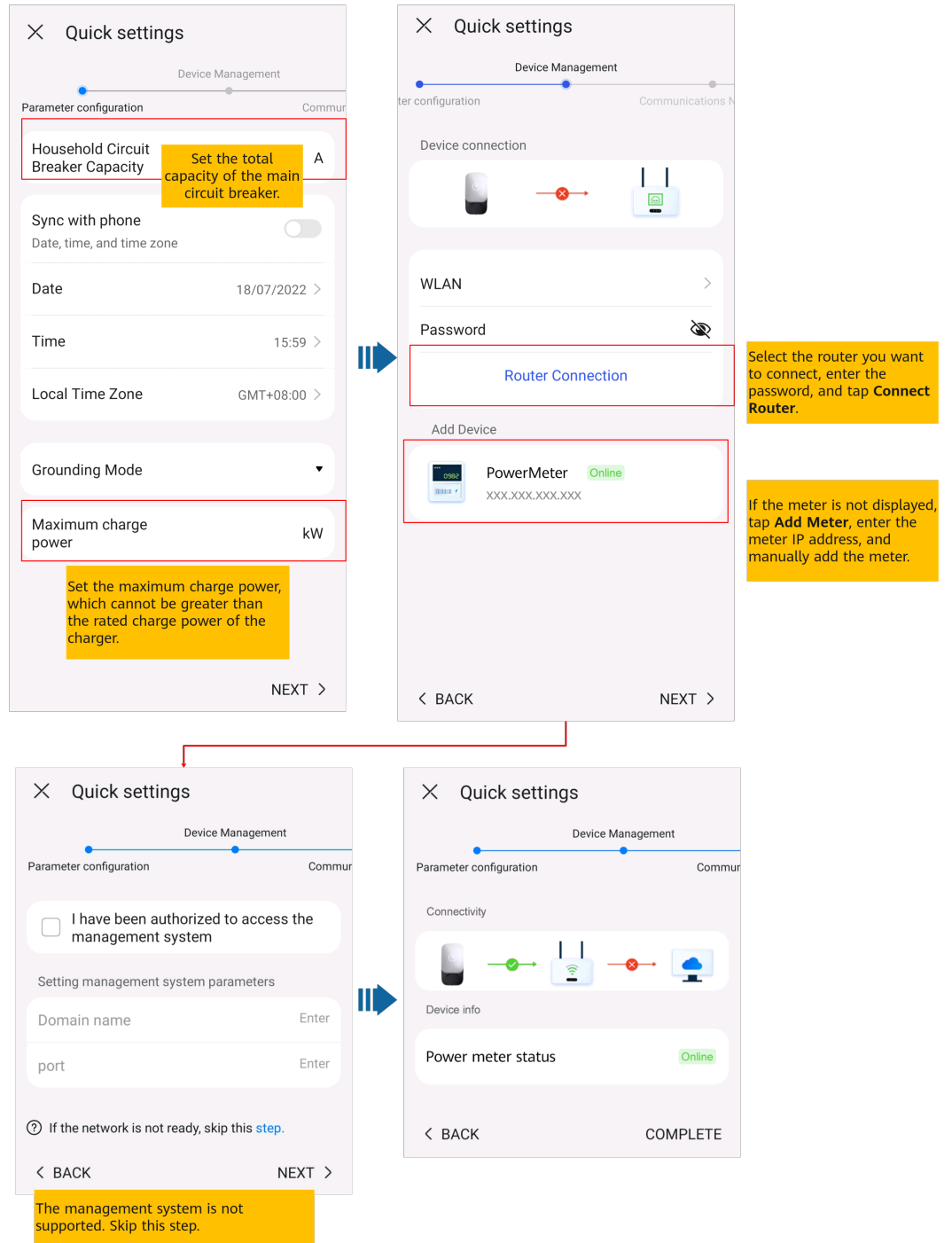
2. Log in to the app as an **installer**.



 **NOTE**

For the first login, the initial password is **Changeme**. If the system prompts you to set a password, set the login password as prompted.

3. Commission the device according to the wizard procedure.



NOTE

Set the capacity of the main circuit breaker based on site requirements. If the set value is greater than the actual capacity, the circuit breaker trips due to overcurrent. If the capacity of the circuit breaker is too low, the charger cannot work.

3 FAQs

3.1 How Do I Reset the Default Password of a Charger Using an RFID Card When I Forget the Password?

Description

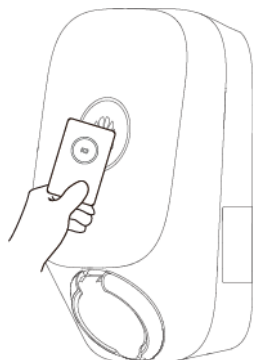
If you forget the password, you can reset the charger login password to **Changeme** by swiping the card.

Precautions

Before resetting the password, ensure that the charger is idle.

Procedure

1. Swipe the card for five consecutive times (at an interval of less than 1.5s). The indicator on the charger is steady white for 3s and the charger enters the swipe protection state. Stop swiping the card now.
2. After 3s, the indicator blinks white fast for 20s. If you swipe the card again within this 20s, the indicator turns off and pulsates after 3s, indicating that the charger password has been successfully reset.



 NOTE

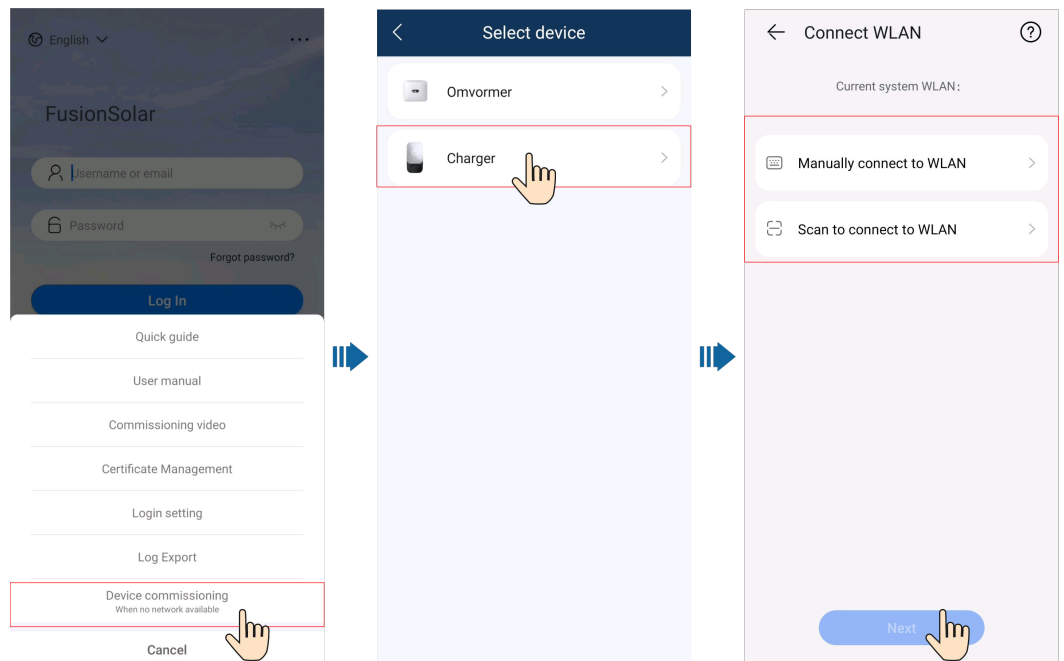
Do not swipe the card again in the swipe protection state. Otherwise, the reset fails and you need to restart the procedure.

3.2 How Do I Connect to a Charger when I Cannot Log In to the FusionSolar App Due to Poor Network Connection?

 NOTE

Before connecting to the WLAN of the charger, disable the mobile network function and ensure that the mobile phone cannot connect to the Internet. When connecting to the WLAN of the charger, enable the WLAN as prompted.

1. On the app login screen, tap ... > **Device commissioning (When no network available)**.
2. Tap **Charger** and connect to the WLAN of the charger as prompted.



4 Related Information

4.1 Indicators

Indicator Status	Charger Status
Cycle: pulsating white for 4s and off for 1s	Idle (default state or charging gun removed from the vehicle)
Cycle: steady blue for 4s and off for 1s	Gun plugged (The authentication function is disabled.)
Cycle: pulsating blue for 1s	Charging
Steady blue	Charging ended (The charging gun is not removed.)
Cycle: pulsating white for 4s and off for 1s	Scheduled charging waiting
Cycle: pulsating green for 1s	Green power charging waiting and green power charging in progress*
Cycle: flashing red for 0.5s	Alarming
Steady red	Faulty
Cycle: flashing white for 0.5s	Software upgrading
Fast flashing blue for three times (0.75s)	Card swiping successful/Authentication successful
Fast flashing red for three times (0.75s)	Card swiping failed
Flashing white (0.5s)	RFID card waiting to be swiped
Steady white for 5s	RFID card added successfully

Indicator Status	Charger Status
Steady white for 3s and then flashing white (0.5s/time, lasts for a maximum of 20s)	Preparing for reset
Off for 3s and then pulsating white	Reset successfully