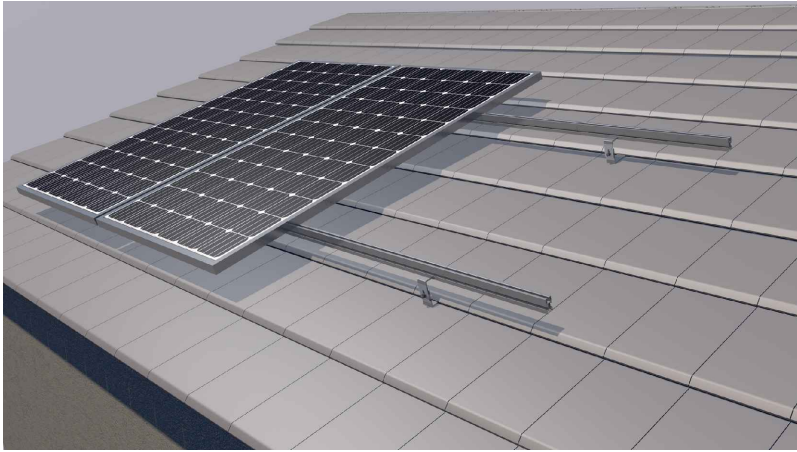


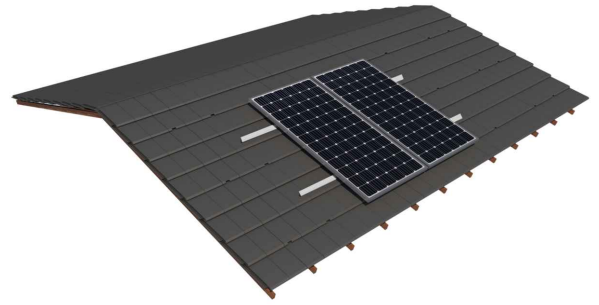
Documentazione tecnica

Supporto complanare continuo salva tegole regolabile

Kit 02.4V



TIPI DI MONTAGGIO



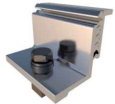
COMPONENTI



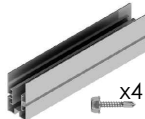
S02.4



G1



S10



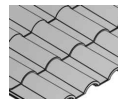
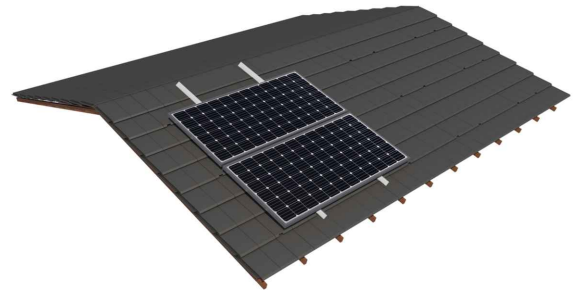
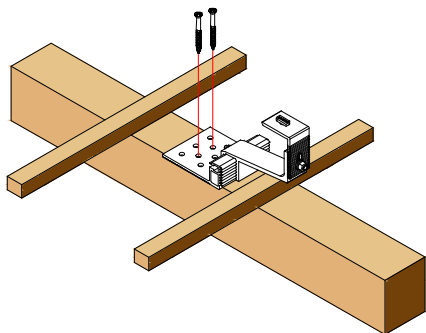
UG1



S11



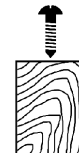
Tappo G1



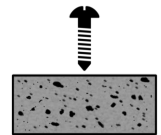
Tegola



Ancoraggio a
trave di acciaio



Ancoraggio
a legno



Ancoraggio
a calcestruzzo



Attrezzi necessari:

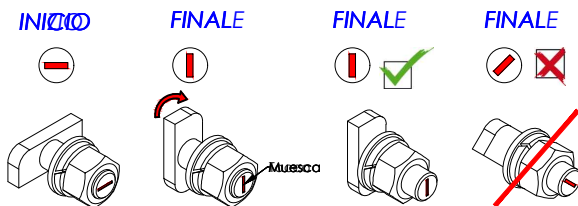


Riciclabile al 100%

Marchio
ES19/86524 CE

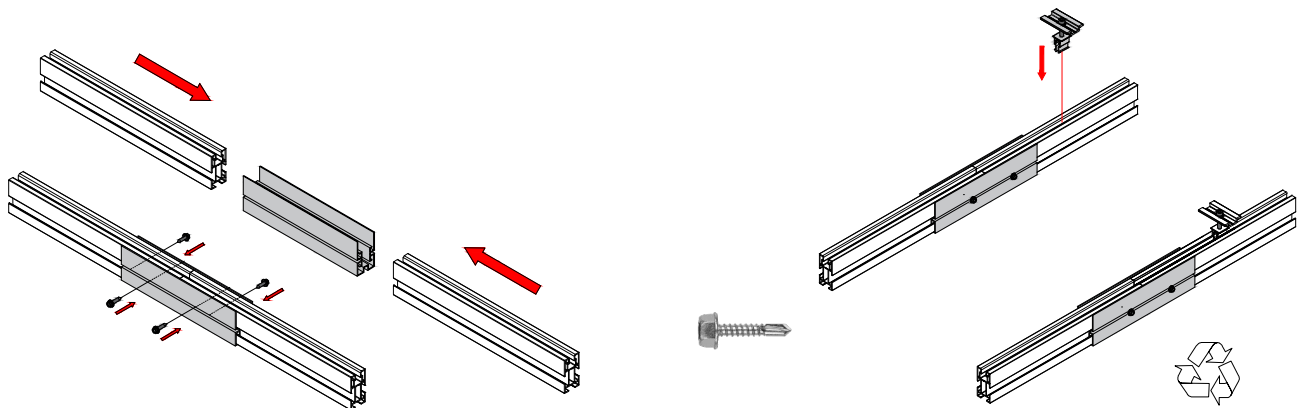
Sicurezza:





Coloca el tornillo anterior (muesca del tornillo en la parte interior del perfil y en la gura estrecha. Gíralo a derecha hasta su tope (muesca del tornillo en redida))

Aségurate de que la muesca del tornillo está en posición vertical y ca apriete ese espacio al darle la vuelta. No apriete el tornillo ni inclinado una vez apretado!



Documentazione tecnica

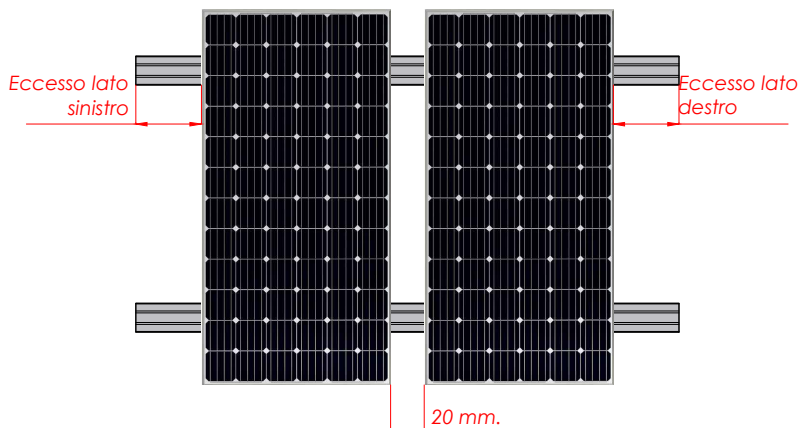
Supporto complanare continuo salva tegole regolabile

Kit 02.4V

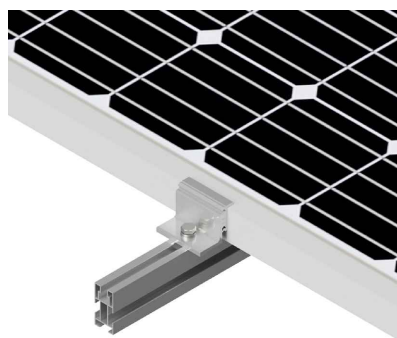
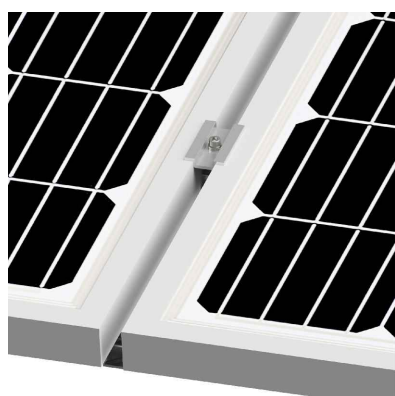
 **SUNFER**

FISSARE I MODULI SUI PROFILI

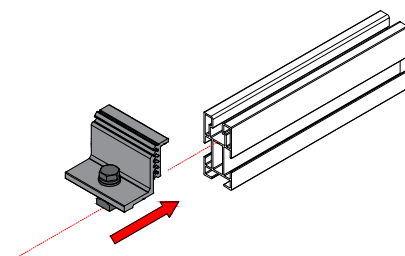
Distribuire i moduli in modo che siano disposti simmetricamente lungo il supporto, lasciando la stessa distanza alle estremità.



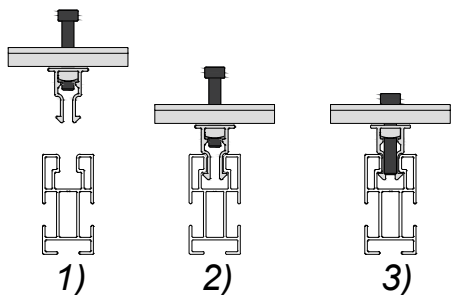
FISSAGGIO DEI MODULI CON I MORSETTI



Fissaggio laterale

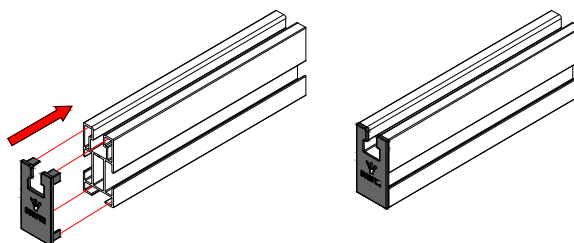


Fissaggio centrale



- 1) Allineare il morsetto con il profilo
- 2) Scendere finché fa clic
- 3) Avvitare la vite.

INSTALLAZIONE DEI TAPPI G1



Inserire i tappi G1 nelle 4 estremità dei profili del kit



Marchio
ES19/86524

CE

7/7