

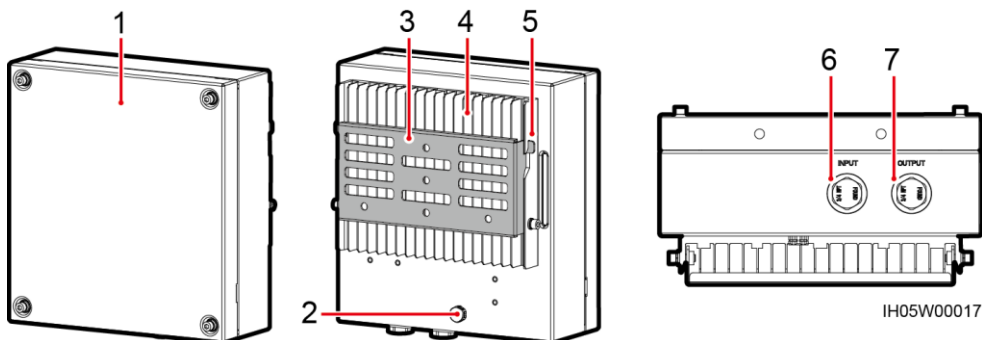
HW-TX-5000 Autotransformer Quick Guide

Issue: 01
Date: 2018-06-29

HUAWEI TECHNOLOGIES CO., LTD.



1 Overview



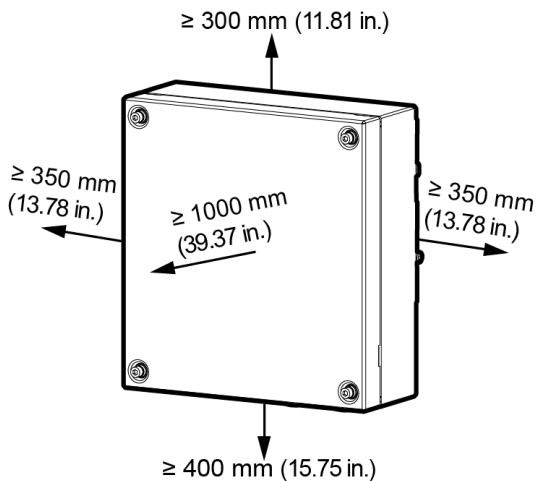
IH05W00017

- (1) Cover
- (2) Ventilation valve
- (3) Mounting bracket
- (4) Heat sink
- (5) Hanging kit
- (6) AC input power cable gland (INPUT, 3/4 in.)
- (7) AC output power cable gland (OUTPUT, 3/4 in.)

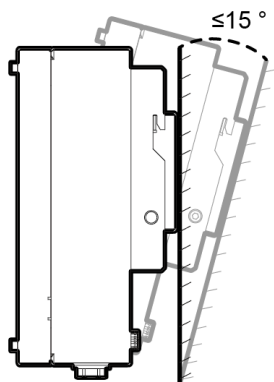
2 Installation

1. Plan the installation clearances of the autotransformer.

Clearances

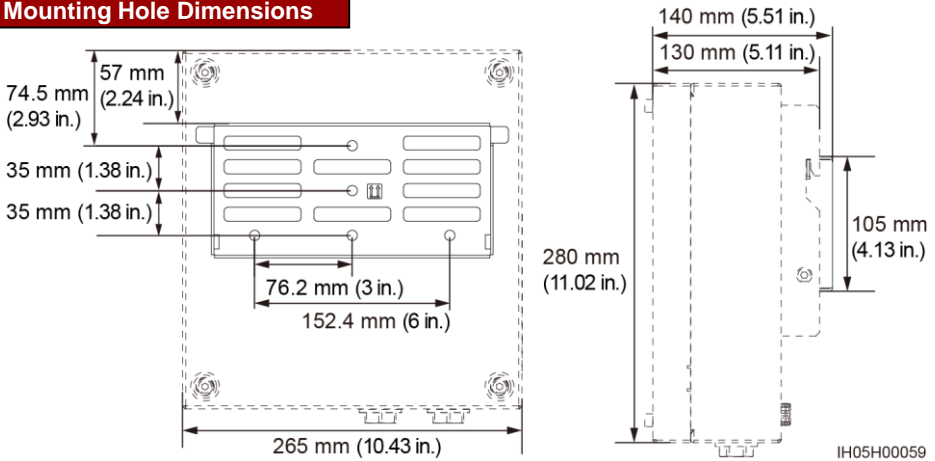


Angle



IH05H00058

Mounting Hole Dimensions




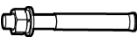
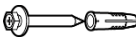
IH05H00059

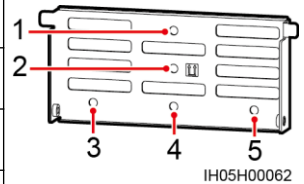
2. Install the mounting bracket (using the frame post as an example).



NOTICE

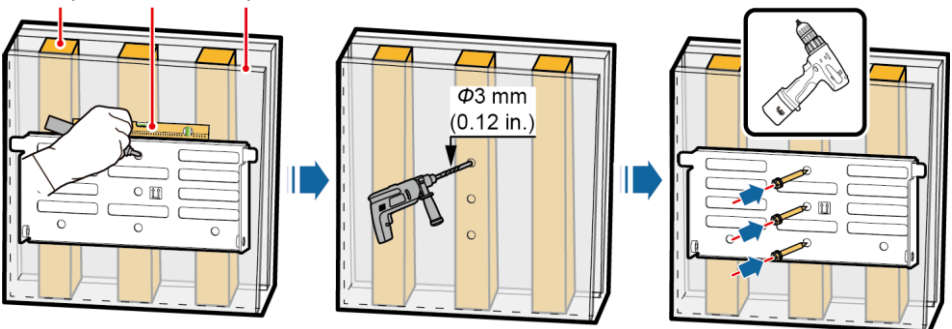
- Prepare the tightening screws according to the load-bearing structure. This document introduces how to install the autotransformer on a wall as an example. The installation method on a support is the same as the installation method on a frame post. Prepare M6 stainless bolt assemblies (including flat washers, spring washers, and M6 bolts) with appropriate lengths as well as matched flat washers and nuts based on the support specifications.
- Secure the mounting bracket using either of the following hole combining methods: 1. line combination (1, 2, and 4); 2. staggered combination (1, 3, and 5).
- The autotransformer weighs about 13 kg.

Load-Bearing Structure	Frame post	Brick wall/Fiber-cement composite panel	Plywood
Tightening Screw	M6 tapping screw	M6 expansion bolt	M6 expansion anchor screw
Screw Quantity	3 PCS	3 PCS	3 PCS
Screw Appearance			



IH05H00062

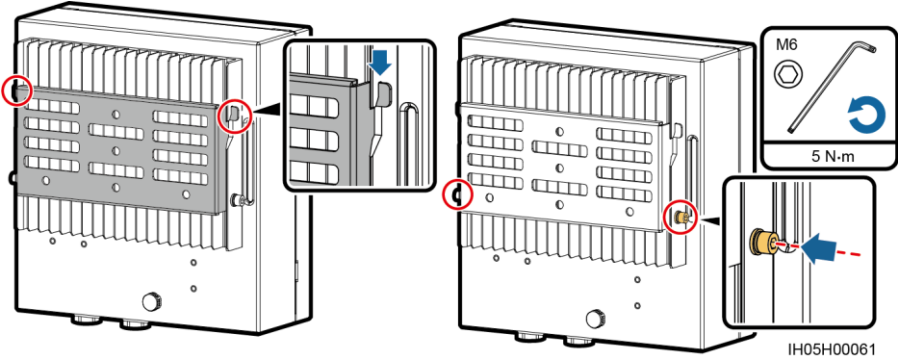
Frame post Level Wall panel



IH05H00064

3. Install the autotransformer on the mounting bracket.

4. Tighten the screws.



IH05H00061

3 Cable Connections

3.1 Preparing for Installation

NOTICE

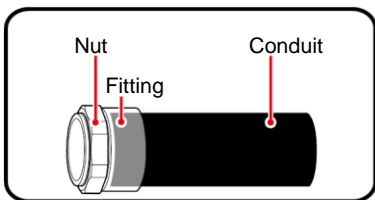
- Connect cables in accordance with the local installation laws and regulations.
- Do not install cables with power on.

Cable	Type	Conductor Cross-Sectional Area Range	Source
AC input power cable	<ul style="list-style-type: none"> • Use cables that can withstand 90°C (194°F) or 105°C (221°F). • Two single-core outdoor copper cables (L1, L2) 	L1, L2: 10–6 AWG	Purchased by the customer
AC output power cable	<ul style="list-style-type: none"> • Use cables that can withstand 90°C (194°F) or 105°C (221°F). • Four single-core outdoor copper cables (L1, N, L2, and PE) 	L1, N, and L2: 10–6 AWG PE: 8 AWG	Purchased by the customer
Component	Description	Source	
AC switch	Recommended: a 2-pole AC circuit breaker with a rated voltage greater than or equal to 240 V AC and a rated current of: <ul style="list-style-type: none"> • 25 A (SUN2000-3.8KTL/5KTL/7.6KTL-USL0) • 30 A (SUN2000-9KTL/10KTL/11.4KTL-USL0) 	Purchased by the customer	

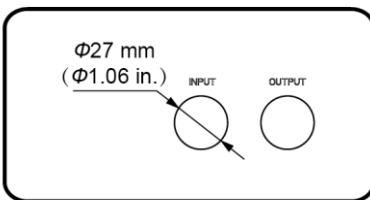
3.2 Preparing Threading Pipes

The specifications of the pipes should comply with those of the cable glands. For example, for a 3/4 in. waterproof block, a 3/4 in. pipe is recommended. The pipe appearance shown in the following figure is for reference only. The actual pipes prevail.

Threading Pipe



Cable Hole Diameter at the Enclosure Bottom

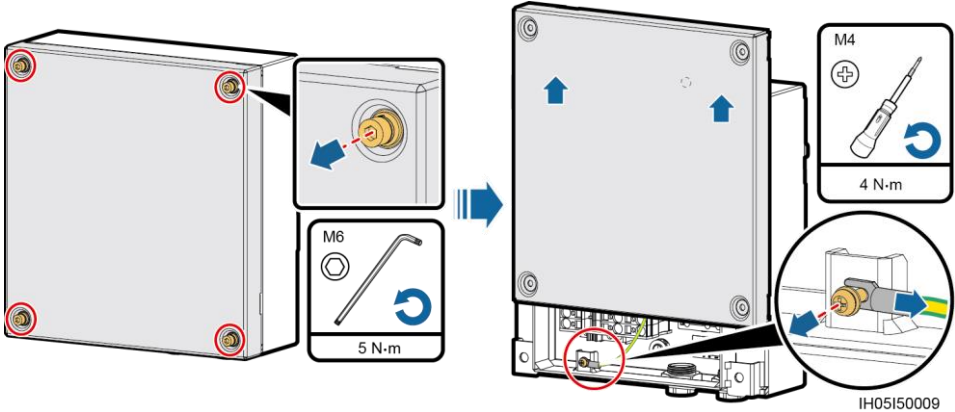


IH05H00063

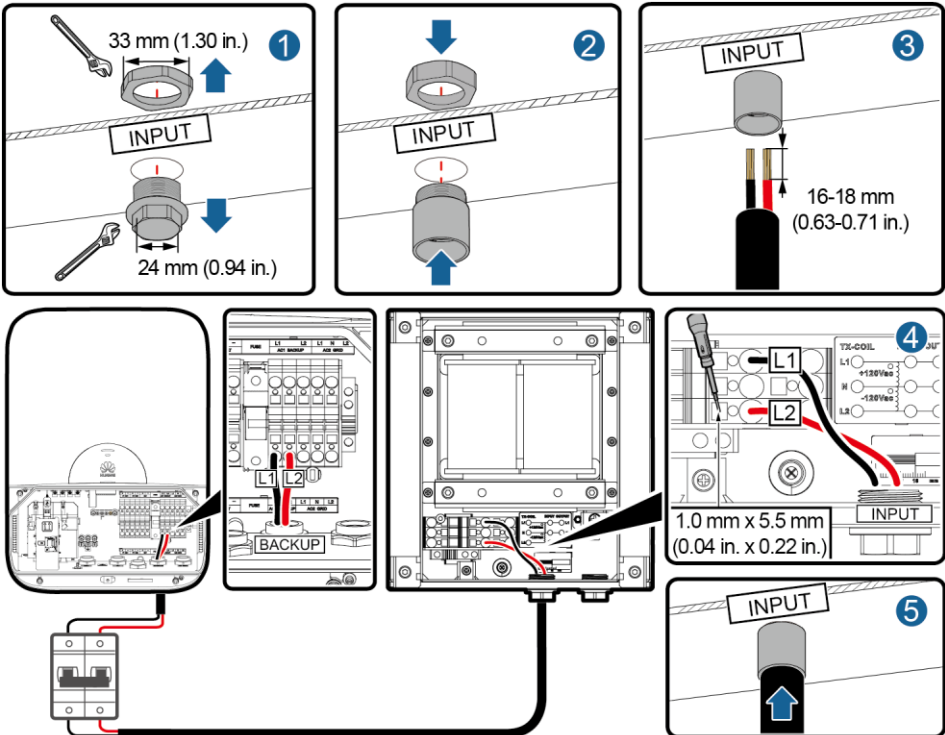
3.3 Removing the Cover and PE Cable

⚠ NOTICE

- Do not open the cover in rainy or snowy days. If you have to, take protective measures to prevent rain or snow from entering the Autotransformer compartment.
- Do not leave unused screws in the Autotransformer compartment.



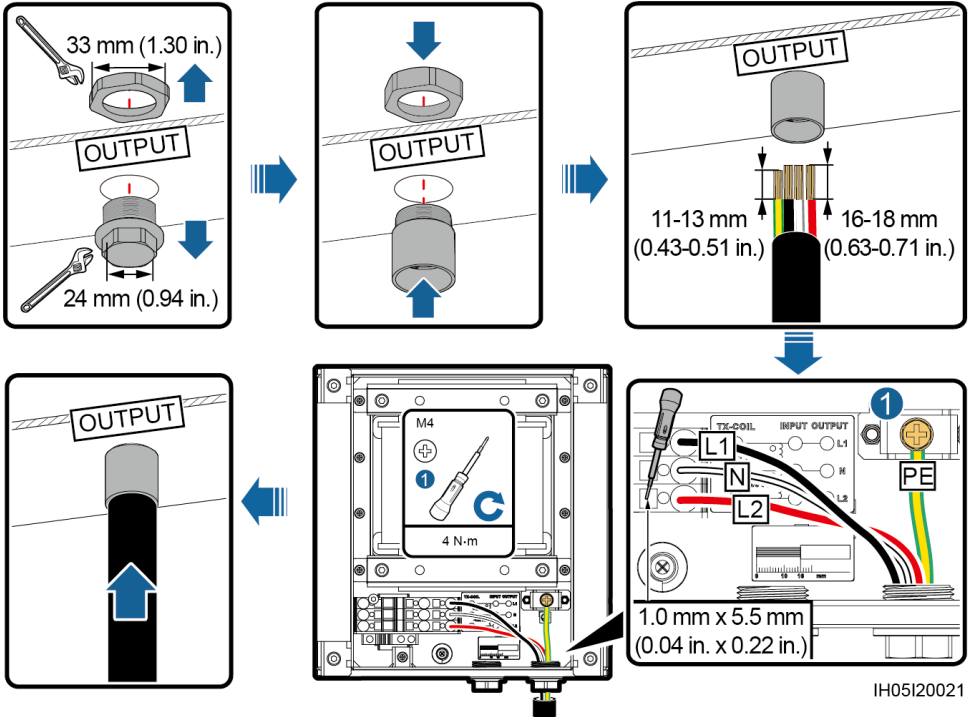
3.4 Installing the AC Input Power Cable



NOTICE

- When connecting the cable, ensure that the exposed core wire is totally inserted into the cable hole and connected securely. Failing to do so may cause the autotransformer malfunction and damage.
- In the following figure, 1.0 mm x 5.5 mm (0.04 in. x 0.22 in.) indicates the thickness and width of the screwdriver blade.

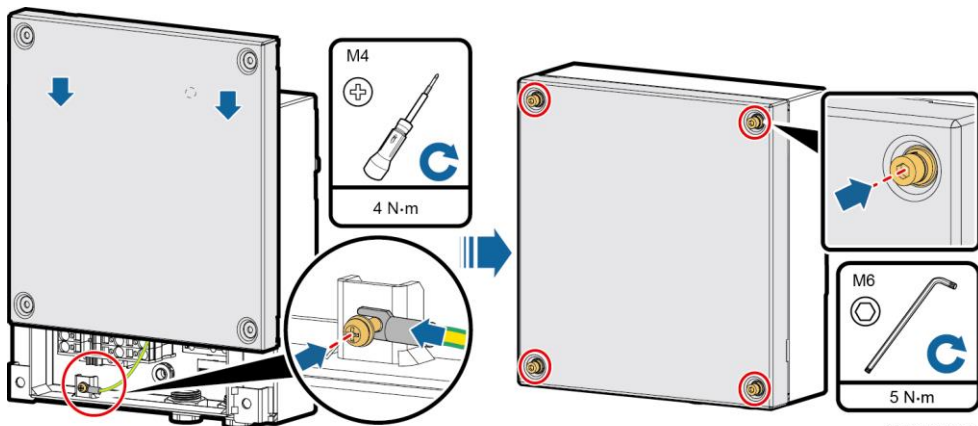
3.5 Installing the AC Output Power Cable



4 Installing the PE Cable and Cover

NOTICE

- Before closing the cover, check that the cables are correctly and securely connected. Then take proper measures to ensure that the pipe conduits and fittings are reliably secured. Seal cable holes to ensure that the cover and sealing washer are intact and free from any foreign objects. Clean the foreign objects in the maintenance compartment if there is any.
- If the screws on the enclosure door are lost, obtain the spare screws from the fitting bag.



Huawei Technologies Co., Ltd.
Huawei Industrial Base, Bantian, Longgang
Shenzhen 518129 People's Republic of China
www.huawei.com